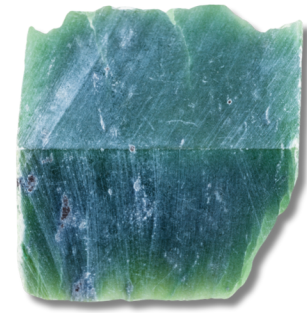


Nephrite



Nephrite is a type of jade, renowned for its beautiful toughness and historical significance. It has been used for centuries in various cultures for both ornamental and spiritual purposes.

Fun Facts:

Color: Nephrite commonly comes in shades of green, ranging from pale to dark green. It can also be found in colors like white, grey, brown, and even black.

Origin: Nephrite is primarily found in regions such as British Columbia in Canada, New Zealand, Siberia in Russia, and China.

Composition: Nephrite is a calcium magnesium iron silicate, which gives it a fibrous structure and contributes to its toughness.

Historical Uses: Nephrite has been used by ancient cultures for tools, weapons, and religious artifacts due to its durability and beauty.

Healing Properties: In crystal healing, nephrite is thought to promote balance and harmony, aiding in emotional healing and stress relief.

Symbolism: Nephrite is often associated with purity, serenity, and protection, making it a popular stone for amulets and talismans.

Durability: Nephrite is extremely tough and resistant to breakage, more so than steel, which is why it was historically used to make tools and ornaments.

Cultural Significance: In Chinese culture, nephrite jade is highly valued and has been considered a symbol of status, wealth, and power.

Varieties: Nephrite is one of the two distinct minerals commonly referred to as jade, the other being jadeite.

Luster: Nephrite has a waxy to silky luster, giving it a unique and appealing shine when polished.